

MEMBERSHIP PLAN

WELCOME TO YOUR

# Select

## Health Cash Plan

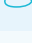



Your Select plan helps you and your family by providing money back on everyday healthcare costs. Enjoy easy access to additional benefits including a virtual GP and our rewards platform through your Breeze app.





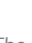

### Your **Select Plan** at a glance.

View the range of benefits in the table below, please check your level and terms and conditions before using a benefit.

#### Benefits employees can claim for:

		LEVEL 1	LEVEL 2	LEVEL 3	LEVEL 4	LEVEL 5
 <b>Dental</b> (incl. Check-ups, braces, whitening and more)	Per adult Per child	£65 £30	£90 £45	£120 £60	£175 £85	£230 £115
 <b>Optical</b> (incl. Prescription glasses, eye tests, contact lenses and more)	Per adult Per child	£65 £30	£90 £45	£120 £60	£175 £85	£230 £115
 <b>Combined Physiotherapy</b> (incl. Acupuncture, chiropractic, x-rays, osteopathy, homeopathy and more)	Per adult Per child	£170 £85	£200 £100	£315 £155	£425 £210	£565 £280
 <b>Chiropractic</b>	Per adult Per child	£65 £30	£90 £45	£120 £60	£175 £85	£230 £115
 <b>Health &amp; Wellbeing</b> (incl. allergy testing, counselling, sports massage and more)	Per adult Per child	£85 £40	£100 £50	£140 £70	£195 £95	£250 £125
 <b>Health Screening</b>	Per adult Per child	£85 £40	£100 £50	£140 £70	£195 £95	£250 £125
 <b>Specialist Consultation and Scanning</b> (incl. CT scans, mammograms, colonoscopy, biopsy and more)	Per adult Per child	£200 £200	£220 £220	£260 £260	£300 £300	£400 £400
 <b>Dental accident</b>	Per adult Per child	£180 £90	£300 £150	£400 £200	£600 £300	£800 £400
 <b>Personal Accident Protection</b>	Per adult Per child	£5,000 £2,500	£5,000 £2,500	£5,000 £2,500	£5,000 £2,500	£5,000 £2,500

#### Additional Benefits

 <b>GP Anytime</b>	✓	✓	✓	✓	✓
 <b>24/7 Counselling &amp; support helpline</b>	✓	✓	✓	✓	✓
 <b>Health Assessments</b>	✓	✓	✓	✓	✓
 <b>Perks</b>	✓	✓	✓	✓	✓
 <b>SkinVision</b>	✓	✓	✓	✓	✓
 <b>My Gym Discounts</b>	✓	✓	✓	✓	✓

The table shows the maximum amounts you can claim for on your plan. Health Shield review these amounts annually so they may change.

Discover more at [healthshield.co.uk](https://healthshield.co.uk)

## About your plan:

- ✔ Money back on everyday healthcare costs such as dental, optical and physiotherapy
- ✔ Dependent children covered at no extra cost\*, partners can be added for an additional charge
- ✔ Simple and fast online claims, money back typically within 3-5 working days
- ✔ Access to Additional Benefits including virtual GP and a 24/7 counselling and support
- ✔ Exclusive discounts and cashback on shopping via PERKS
- ✔ Access your benefits on the go, in the palm of your hand, with the Breeze app

## Need additional cover?

We understand that everyone is different. That's why we offer varying levels of cover depending on your needs. You can add partners, increase your level of cover **for you** or **you and your partner** at an extra cost†. Below are the options on offer:

To check the cost of additional cover, select the level of cover that you are currently on (you can check this online) and then refer to the columns on the right of the table for the new premium price.

### Option 1 Increase my level just for me

For example - if your company is paying for Level 1 for you and you want to increase to Level 2 for you, then you'll pay £8.93 per month

### Option 2 Add my partner to my current level of cover

For example - if your company is paying for Level 1 for you and you want to add your partner, then you'll pay £9.98 per month

### Option 3 Add my partner and increase my level of cover

For example - if your company is paying for Level 1 for you and you want to increase to Level 2 and add your partner, then you'll pay £19.98 per month

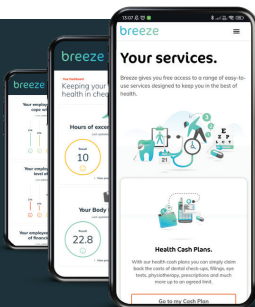
### Option 4 Increase the level for me and my partner

For example - if your company is paying for Level 1 for you and your partner and you want to increase to Level 2 for you and your partner, then you'll pay £15.21 per month

COMPANY SPONSORED/ PAID LEVEL OF COVER	NEW LEVEL OF COVER				
	LEVEL 1	LEVEL 2	LEVEL 3	LEVEL 4	LEVEL 5
Level 1	→	£8.93	£14.23	£26.23	£42.73
Level 2	→		£12.50	£24.50	£41.00
Level 3	→			£19.30	£35.80
Level 4	→				£25.83
Level 1	£9.98				
Level 2	→	£18.25			
Level 3	→		£26.30		
Level 4	→			£39.33	
Level 5	→				£60.98
Level 1	→	£19.98	£33.22	£56.23	£90.23
Level 2	→		£31.49	£54.50	£88.50
Level 3	→			£49.30	£83.30
Level 4	→				£73.33
Level 1	→	£15.21	£28.45	£51.46	£85.46
Level 2	→		£24.99	£48.00	£82.00
Level 3	→			£37.60	£71.60
Level 4	→				£51.66

\*Up to the age of 21, living at home and in full-time education.

† Adding partners or increasing your level of cover is available to members in the UK only.



## Manage your plan on the go



Access to your benefits in the palm of your hand with the Breeze app.



Discover more about the great health benefits on offer, make claims and access services on the app or visit [members.healthshield.co.uk](https://members.healthshield.co.uk)



Rated "Excellent"

This is a Financial Promotion

Health Shield Friendly Society Limited is authorised by the Prudential Regulation Authority and regulated by the Financial Conduct Authority and the Prudential Regulation Authority.

SELECT MP / JAN24 Copyright © 2023 Health Shield Friendly Society Limited.

Discover more at [healthshield.co.uk](https://healthshield.co.uk)